

## Y6 Autumn Knowledge Organiser - Art

### Key Facts

**Kimmy Cantrell**- Born in 1957

Sculptor Kimmy Cantrell is known for colourful ceramic masks depicting expressive asymmetrical faces with exaggerated eyes and whimsical features. Cantrell uses his art as a way to challenge traditional European conceptions of beauty.

“the beauty is in the imperfections”

### Key Vocabulary

Conflict art- an art form produced by artists who respond to the consequences of war.

Sketching

Blending

Composition

Slip

Layers

Kimmy Cantrell



Poppy



## Y6 Spring Knowledge Organiser - Art

### Key Vocabulary

Print  
Layering

### Key Vocabulary

Portrait  
landscape  
Proportion  
Perspective  
Shading  
Blending  
Mixing  
Shade  
Tint



Foreground, Middle ground, Background

### Complementary Colours



### Landscape using tints



## Y6 Summer Knowledge Organiser - Art

### Key Facts

**George Seurat- (2<sup>nd</sup> Dec 1859-29<sup>th</sup> March 1891)**

- French post impressionist
- Best known for devising painting techniques such as pointillism.

### Key Vocabulary

**Pointillism-** applying small strokes or dots of colour to a surface so that from a distance they visually blend together.

Shading techniques

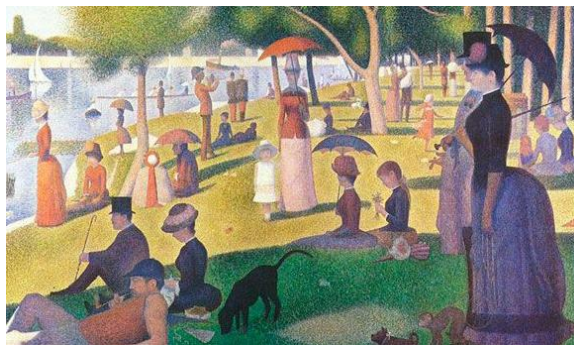
Tone

### George Seurat

**Bathers at Asnieres**



**Sunday Afternoon on the Island of La Grand Jatte**



### Shading Techniques

